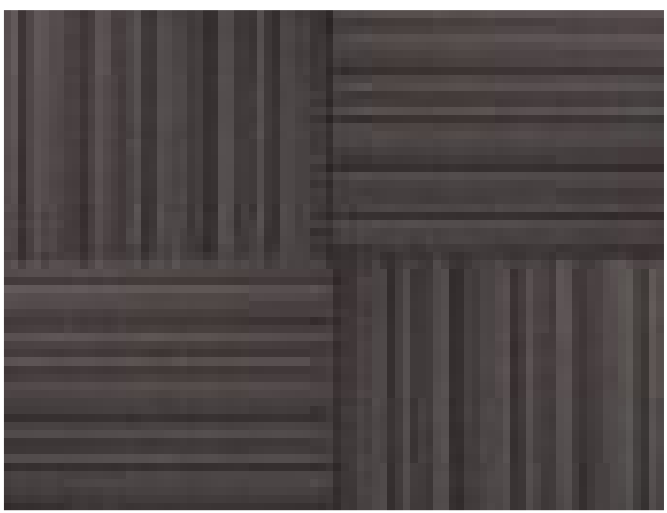


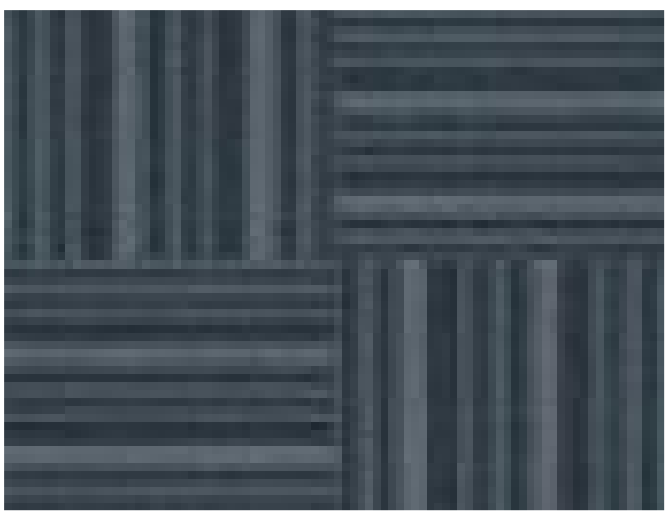
RI 31 BLUE



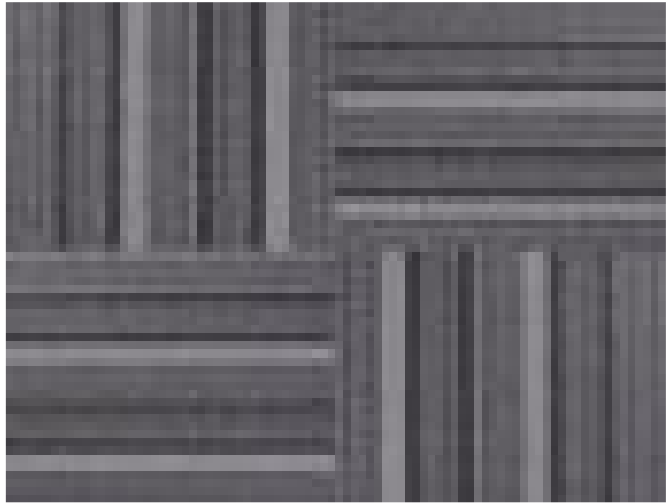
RI 32 BLACK



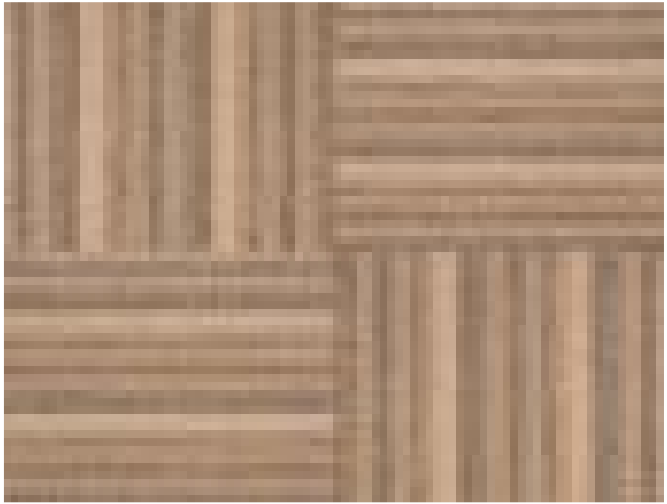
RI 33 RED



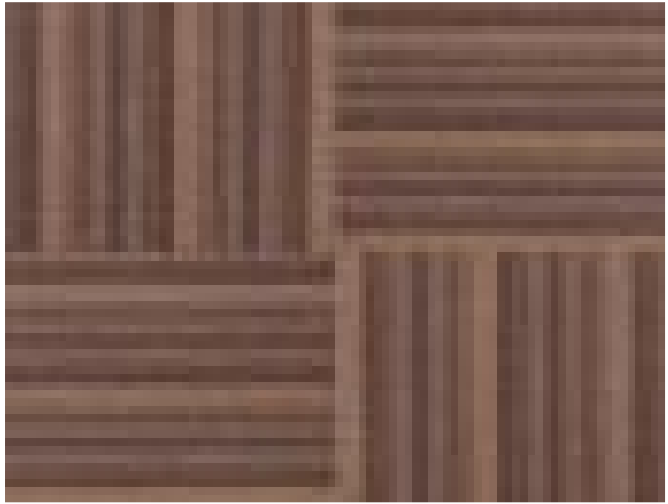
RI 34 GREEN



RI 35 GRAY



RI 36 BEIGE



RI 37 BROWN

Technical Specifications:

Manufacturing Process: TUFTED	Total Height: 7 mm	Pile Weight: 580 gsm	Backing: PVC (reinforced with glass fiber)
Yarn/ Fibre: 100% PP	Plank / Tile Size: 50cm x 50cm	Construction: LOOP PILE	

View in Studio