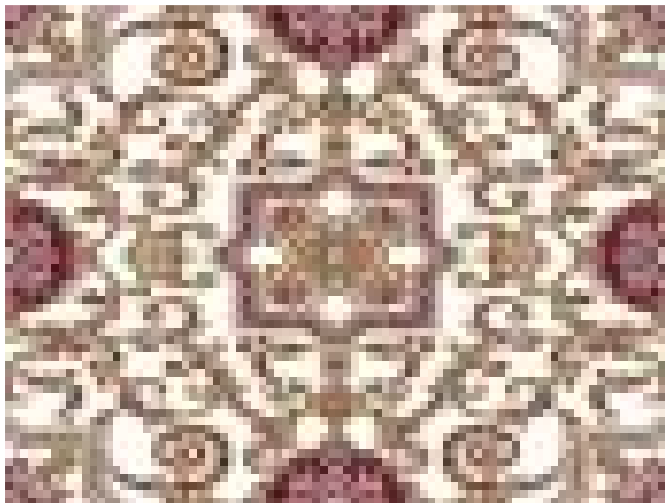


5921 CREAM



5951 RED

Technical Specifications:

Manufacturing Process: TUFTED	Total Weight: 2600-2700GSM	Density: 576000 POINTS	Yarn/ Fibre: PP HEATSET SHRINK + GOLD SHINY
DTEX: 1600	Pile Height: 11MM	Construction: CUT PILE	

View in Studio