

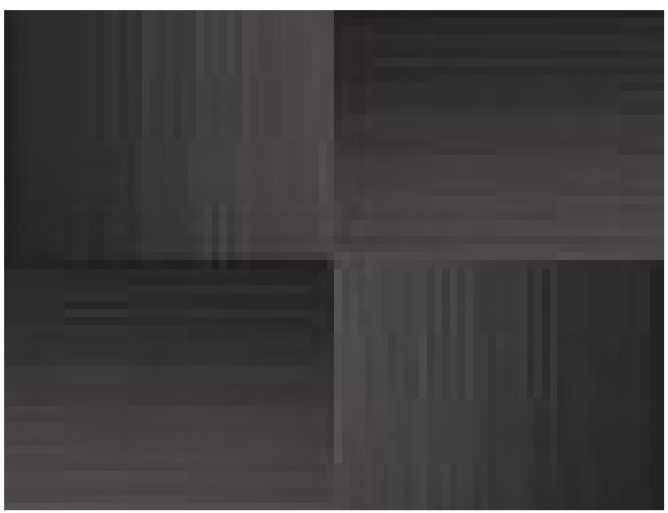
RI 511 BLUE



RI 531 GREEN



RI 541 GRAY



RI 542 BLACK

Technical Specifications:

Manufacturing Process: TUFTED	Total Height: 5 mm	Pile Weight: 575 gsm	Backing: BITUMEN (with non woven)
Yarn/ Fibre: 100% PP	Plank / Tile Size: 50cm x 50cm	Construction: LOOP PILE	

View in Studio