



611 BLUE



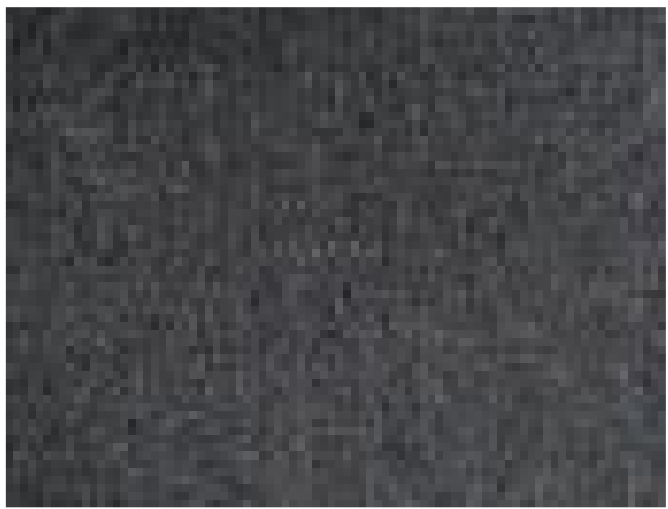
621 BEIGE



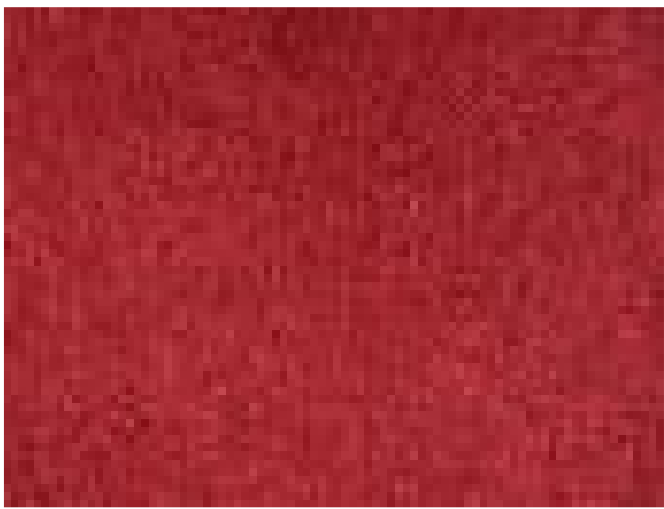
622 BROWN



641 GRAY



642 BLACK



651 RED



Technical Specifications:

Manufacturing Process: TUFTED	Total Height: 7 mm	Pile Weight: 550 gsm	Backing: PVC (reinforced with glass fiber)
Yarn/ Fibre: 100% PP BC	Plank / Tile Size: 50cm x 50cm	Construction: LOOP PILE	

View in Studio